



THE STRAIT OF GEORGIA DATA CENTRE

PSF's Centralized Repository for
Strait of Georgia Marine Ecosystem Data

Newsletter Issue 2

MARINE SCIENCE PROGRAM





CENTRALIZING INFORMATION

The Strait of Georgia Data Centre (SGDC) serves as a meeting place for information from a spectrum of sources. Whether it be harbour seal count data from the Government of Canada, forage fish spawning habitat data from a network of non-for-profits, or historic kelp distribution data from the University of Victoria, we've referenced it in the SGDC [Marine Data BC](#) metadata portal.

We want to help you have the information you need when making decisions to positively impact the Strait of Georgia (a section of the Salish Sea) marine environment. This includes helping you stay informed about the marine science projects going on around the Strait. Not only do we provide easy access to data that can educate on a specific topic, we visualize and discuss the data through interactive maps and stories found in the [SGDC Map Catalogue](#). These map, story, and data resources can ultimately help form a picture of what's going on in the Strait of Georgia environment, and, ideally, influence positive change for lasting sustainability.

INTRODUCING SOG MRG

An initiative currently underway at the SGDC is the creation of a data visualization tool titled the Strait of Georgia Marine Reference Guide (SOG MRG). Set for release Summer 2021, SOG MRG will serve as a tool that provides centralized geospatial data for the Strait of Georgia ecosystem. This interactive map will incorporate hundreds of layers across a variety of marine topics, ranging from ecological and environmental to human use.

SOG MRG will simplify access to information already available through the SGDC and allow for comparison of data that lets users form a comprehensive image of the Strait of Georgia marine environment. Some examples of how users will be able to leverage this tool include:

- ▶ **Identifying who is working on what** — in uniting cross-organizational marine information by having it available through the same platform, SOG MRG shows you what others have been working on (i.e. data from government, stewardship groups & aquatic organizations, academia, etc.)
- ▶ **Determining where not to anchor** — if you are a boater, you'll be able to plan your trip by visualizing where sensitive ecosystems (e.g. eelgrass meadows) are that you should avoid when dropping anchor. To complement your efforts, PSF is partnering with a transboundary team to create voluntary no anchor zones in eelgrass meadows which provide vital habitat to juvenile salmon.

▶ **Exploring detailed oceanographic information** — as part of PSF's Citizen Science Oceanography Program, volunteers collect thousands of samples a year for the Strait of Georgia's oceanographic features (e.g. water temperature, salinity, harmful algae prevalence). Through SOG MRG users will be able to compare this comprehensive oceanographic data with any layer of their choosing, key information when considering impacts of climate change on the marine ecosystem.

▶ **Staying informed about aquatic invasive species** — SGDC staff have been working with Fisheries and Oceans Canada to map the spread of European Green Crab. With a visit to SOG MRG, users will be able to see where European Green Crab has been located, as well as access additional informational resources on how you can help stop the spread.

SOG MRG is a collaborative initiative that is part of a broader network of similar Marine Reference Guides for South-west British Columbia: West Coast Aquatic's Marine Ecosystem Reference Guide covering West Coast Vancouver Island ([available here](#)); and the Howe Sound / At'l'ka7tsem Marine Reference Guide produced as part of a MakeWay Project ([available here](#)). In ensuring that you have the necessary information readily available for British Columbia waters, these guides seek to streamline smart choices for a healthy marine ecosystem.

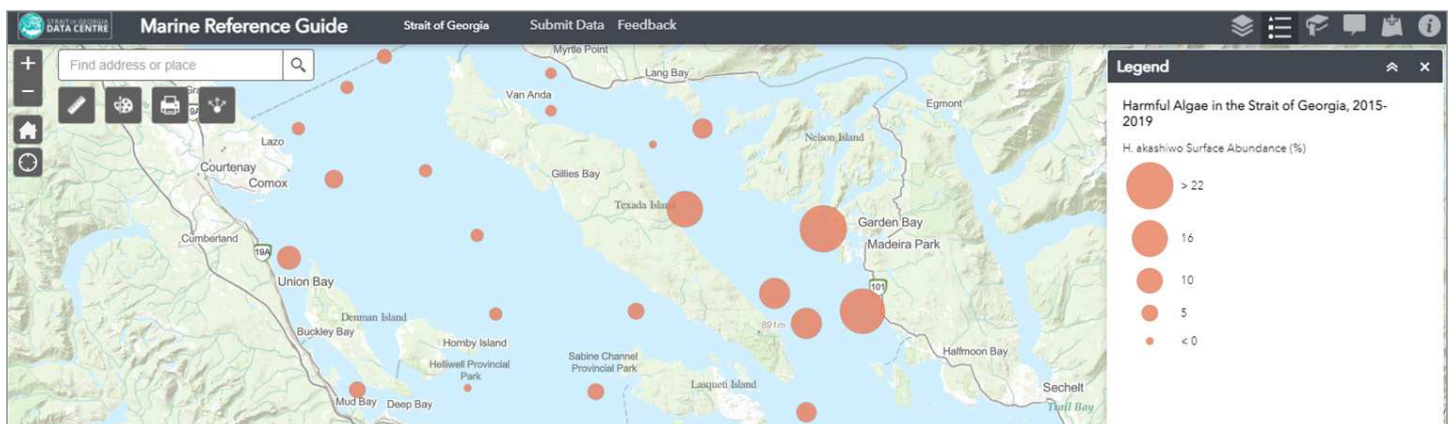



Figure: PSF Citizen Science Oceanography data as seen in the under development SOG MRG.

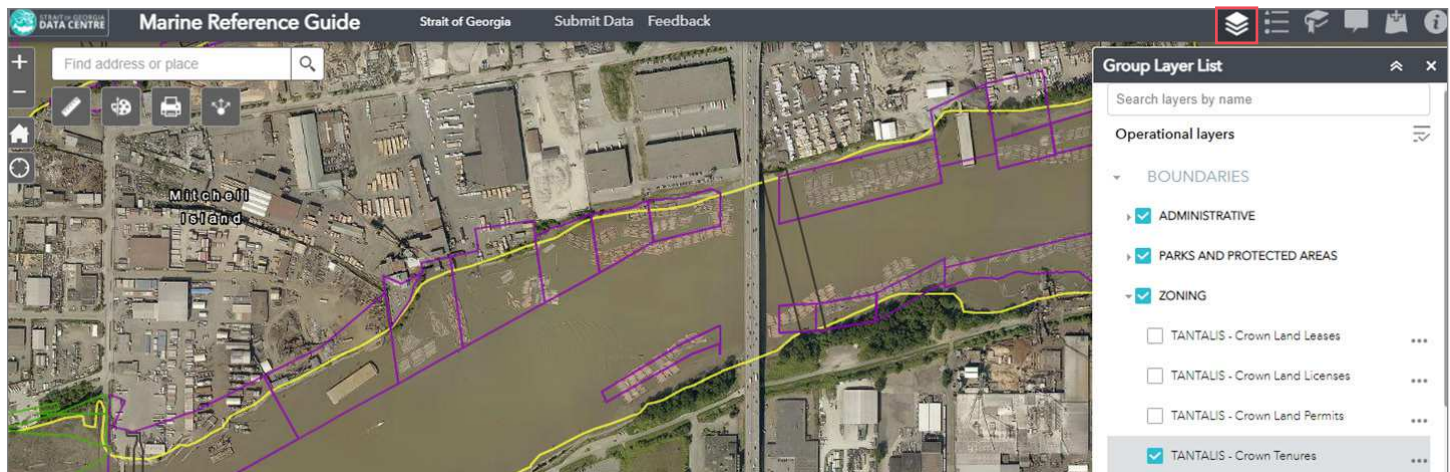
SOG MRG FEATURE SPOTLIGHT

When navigating the SOG MRG interactive map, there are a number of map tools or 'widgets' that guide you through your data visualization experience. Two such widgets are discussed here:

1) The **Layer List** widget, which is represented by the  icon, is described in detail below.

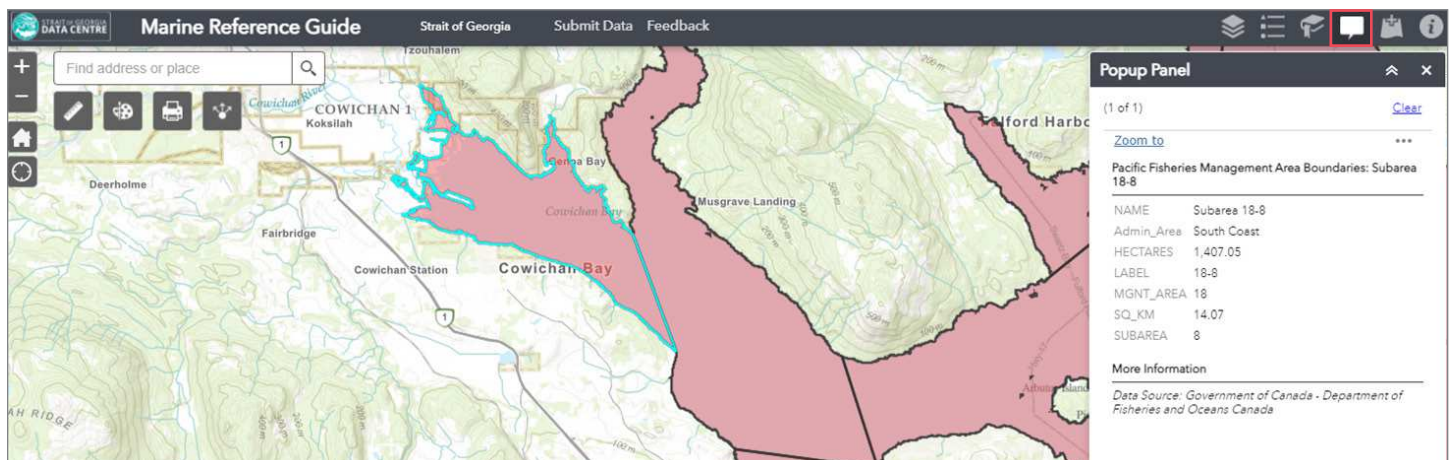


Map Feature	Description	Use	Additional functions	Example use
Layer List	▶ Lists all layers available through the map by default. Layers are organized by categories and sub-categories	▶ Turn layer visibility on and off	▶ Search layer by name ▶ Adjust layer transparency	▶ Find and turn on the 'Crown Tenures' layer in the Zoning sub-category to see where log handling/storage tenures exist

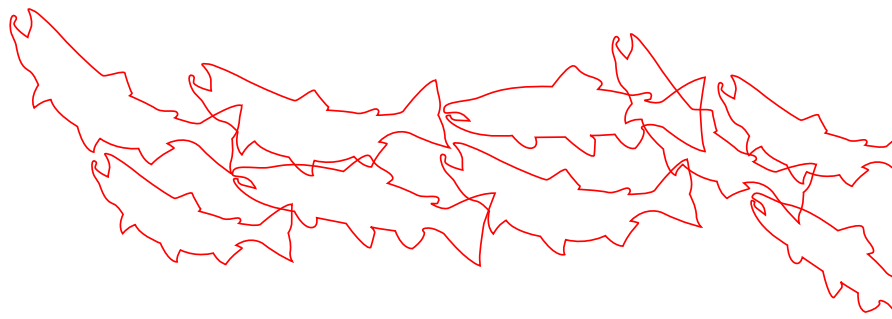


2) When a feature is selected within the map, the **Popup Panel**, represented by the  icon, opens.

Map Feature	Description	Use	Additional functions	Example use
Popup Panel	▶ Lists all data attributes for a particular feature when selected within the map	▶ View data associated with a spatial feature	▶ Access a metadata record from the SGDC Marine Data BC portal ▶ Create a layer containing the selected feature	▶ Identify the name of the specific Pacific Fishery Management Subarea that encompasses your locale of interest



Thank you to the WCVI MERG and Howe Sound / Atl'ka7tsem MRG teams for sharing their amazing map platforms



CO-OP CONTRIBUTORS

The Strait of Georgia Data Centre respects the many efforts of the academic community, with a partnership between Pacific Salmon Foundation and the University of British Columbia Institute for the Oceans and Fisheries at the core of our program. Therefore, we are grateful that we have been able to serve as a place where co-op students can cultivate skillsets as part of our team.

Students have accomplished tasks ranging from data entry & transformation, metadata creation, mapping, storytelling, and outreach. They demonstrate not only that they are willing to learn, but that they are exceptional workers and full of good ideas. The inspiration these leaders of tomorrow bring to our team is immeasurable. Thank you to our co-op students and educational partners around the Strait of Georgia.

Current co-op students: Jake Dingwall, UVic, (photo: top) and Oleg Saldyga, UVic (photo: bottom)



Photo by Michael Miller Media



Photos by Eiko Jones

QUACK SOME FEEDBACK

Have you met the friendly mallard duck that greets you when you visit our 'Contact Us' page?

He's happy to hear your thoughts (and so are we) on how we can improve the Strait of Georgia Data Centre.

Visit our [Contact Us](#) page and help us better serve you by filling out the contact form with a subject choice of:

- ▶ I have a question
- ▶ I found a problem
- ▶ [I have a] Feature request
- ▶ [I have a] General inquiry

Your input greatly assists us in ensuring we can deliver on our goal of making marine information more accessible.



The Pacific Salmon Foundation
1682 West 7th Ave, Vancouver, BC, V6J 4S6
Tel: 604-664-7664 | Email: pearsalli@psf.ca



Institute for the Oceans and Fisheries